

## ANALYSIS OF CAM LEVER DYNAMICS INCORPORATING THE EFFECTS OF THE PSO PROCESS

**VENKANNA BABU MENDI**  
(Reg.No:-24917086)  
*Research Scholar,*  
DEPARTMENT OF  
MECHANICAL  
ENGINEERING  
Shri JJT University,Rajasthan

**Dr. ASHOK KUMARVOOTLA**  
(JJT/ENG/2K9/488)  
*Co-Supervisor,*  
DEPARTMENT OF  
MECHANICAL ENGINEERING  
Shri JJT University Rajasthan

**Dr.S.CHAKRADHARGOUD**  
(JJT/ENG/2K9/308)  
*Supervisor,*  
DEPARTMENT OF  
MECHANICAL  
ENGINEERING  
Shri JJT University Rajasthan

**ABSTRACT:** The classical particle swarm optimizer takes its cues from the social and evolutionary behavior of swarming animals like birds and fish. With an emphasis on its core and some of the most current cutting-edge implementations, this study aims to give a comprehensive overview of the PSO algorithm, focusing on its development, application, and refinements. Neighborhood topologies, ideas and procedures for finding the inertia weight, constriction factor, cognition and social weights, and viewpoints on parallelization, elitism, niching, and discrete optimization are all provided. We offer an updated synopsis and talk about how we've tried to hybridize with other evolutionary and swarm principles for certain applications if you're interested. When it comes to global optimization, a heuristic approach is particle swarm optimization (PSO). At the moment, it ranks high among the optimization methods that people utilize. An exhaustive analysis of the PSO was provided by this survey. There have been many changes to PSO over the years, including: extensions, hybridization, population topology (including fully connected, von Neumann, ring, star, and random topologies), theoretical analysis (including convergence analysis and parameter tuning), parallel implementation, and modifications (including quantum-behaved, bare-bones, chaotic, and fuzzy PSO).

**Keywords:** *PSO, hybridization, theoretical analysis.*

### 1.INTRODUCTION

Incredible advances in artificial intelligence have been made in the last 20 years thanks to the graphics processing unit (GPU) and a plethora of effective optimization techniques, all without assuming that the problem even exists. Particle swarm optimization has been widely used for solving simple, minimum, continuous/discrete, and poorly structured optimization problems. Using probabilistic transformation principles, PSO's internal operations allow for parallel searches of the solutions hyperspace without requiring any particular understanding of derivatives, much like popular evolutionary computation paradigms like genetic algorithms and differential growth. The norms for the transfer are based on an evolving social behavior that evolved from the social link between flocks of birds and fishing schools. A growing number of difficult real-world optimization problems have found solutions with PSO since its inception in 1995, when traditional methods failed or offered insufficient information. The combination of its simple interface, few customizable parameters, and ease of use makes it a go-to solution for a wide range of issues. Extensive research has been conducted to address and resolve the many important defects in the underlying PSO, which lead to failure modes such as stagnation and local optima convergence. This report summarized major advancements over the last decade in advanced PSO and laid forth its foundations and limitations.

### 2.PARTICLE SWARM OPTIMIZATION: PSO APPROACH

#### Features of Self-Organization

Integral properties of SI systems include the ability to self-organize. It is the process by which a system's global order or coordination emerges from its initially disorderly parts' local interactions. Neither an internal nor an external factor can regulate this process because it is spontaneous. There are three main factors that underlie swarm self-organization, as stated by Bonabeau et al. (1) Extreme dynamical nonlinearity (often incorporating both positive and negative feedback): although the latter helps to stabilize the collective pattern and balances out the former, the former promotes the creation of useful structures. SI strikes a good balance between exploration and exploitation, which allows it to provide a practical, middle-of-the-road method for artificial innovation. (3) Interactions with several nodes: swarm agents employ data propagated by their neighbors to expand their network reach. Studying PSO This evaluation primarily aims to cover PSO advancements as reported in official publications. The following are the six components that we use to classify innovations: You can modify PSOs in many ways; some examples include making them quantum-behaved, bare-bones, chaotic, fuzzy, PSOTVAC, opposition-based, or making small alterations to the

topology. These metaheuristic methods include genetic algorithms, artificial immune systems, Tabu search, simulated annealing, ABC, DE, biogeography-based optimization, harmonic search, and hybridization of PSO with others. extending PSO to several domains of optimization, including limited, binary, discrete, and multiobjective optimization. theoretical investigation of PSO, examination of convergence, and selection of parameters. Utilizing cloud computing, GPUs, and multicore computers, PSO is executed in parallel.

### **PSO is a Member of Swarm Intelligence**

Autonomous, self-organizing systems' cooperative behavior is the primary emphasis of Swarm Intelligence. It could originate in nature or be something that humans have created. Various natural phenomena, such as ant colonies, poultry, flocking birds, bee swarms, and so on, exhibit SI. In addition to multirobot networks, computers programs for optimization data analytics issues are available with some SI human objects. Particle Swarm Optimization (PSO) and Ant Colony Optimization (ACO) are the top swarm intelligence approaches. As it travels through PSO's three dimensions, each particle is aware that its neighbors are guiding it to the optimal location for the swarm as a whole. Thus, Swarm Intelligence includes the PSO algorithm. Composite constructions have long attracted attention due to their ability to leverage the combined properties of multiple materials. Composite systems including steel and concrete often make use of shear connectors to collect and transmit the shear forces produced at the contact between the two materials. A specific number of shear connections must be installed throughout the length of a composite beam with partial contact in order to monitor the beam's behavior under different loading conditions. The linked theories are also heavily affected by the power, rigidity, and ductility of the connectors when it comes to analyzing the floor constructions. One of the most important roles that shear connections perform in steel-beton composite columns is to unite and consolidate the individual components. Therefore, shear connector behavior is critical for composite system operation. 1.1. Shear between connector tubes. Shear connections are booming in popularity for three key reasons in many countries. The primary benefit of this plug type is its lower price compared to alternatives like Perforbond plugs.

### **3.HYBRIDIZATION**

By combining PSO with a handful of evolutionary and conventional optimization techniques, we were able to overcome the limitations of each method while reaping their benefits. This type of PSO is called hybridized PSO. Based on GA-based soft computing techniques, Kuo and Hong presented a two-stage investment portfolio method. Data envelopment analysis was used to select the most profitable funds in the first stage, and a GA/PSO asset allocation hybrid was proposed in the second stage. Chen and Kurniawan developed a two-stage optimization method to find the best plastic injection molding process parameters for various quality aspects. Taguchi, BPNN, GA, and PSO-GA (PSO-GA) were all used in this study to find the best parameter values. To greatly improve the classification accuracy rate, Nazir et al. employed local binary pattern (LBP) to extract local information from the face, which they then merged with clothing features. Next, we combined PSO and GA to select the most significant feature set that more accurately represented the gender, therefore reducing the data size dimension. Vidhya and Kumar implemented a hybrid method that combines PSO and GA for channel estimation in MIMO orthogonal frequency division multiplexing (MIMO-OFDM) systems. All computed iterations, mutation and crossover values, and overall performance were better with the proposed approach than with the LS and MMSE approaches. Using three separate, nonoverlapping training sets, Xiao et al. constructed three separate models based on neural networks: the Elman network, the generalized regression neural network (GRNN), and the wavelet neural network (WNN). In terms of prediction performance, the ensemble ANNs-PSO-GA technique surpassed other single models and linear combination models, according to their empirical data. The authors Ghamisi and Benediktsson introduced a new approach to feature selection using a GA and a PSO together. The fitness value was the overall accuracy of a support vector machine (SVM) classifier on validation samples. To evaluate the new approach, the widely-used Indian Pines hyperspectral dataset was utilized. The results confirmed that the innovative method could automatically select the most informative information based on classification accuracy while also taking reasonable processing time into account, all without requesting users to predetermine the amount of data needed.

#### **Theoretical Analysis**

By combining PSO with a handful of evolutionary and conventional optimization techniques, we were able to overcome the limitations of each method while reaping their benefits. This type of PSO is called hybridized PSO. Based on GA-based soft computing techniques, Kuo and Hong presented a two-stage investment portfolio method. Data envelopment analysis was used to select the most profitable funds in the first stage, and a GA/PSO asset allocation hybrid was proposed in the second stage. Chen and Kurniawan developed a two-stage optimization method to find the best plastic injection molding process parameters for various quality aspects. Taguchi, BPNN, GA, and PSO-GA (PSO-GA) were all used in this study to find the best parameter values. To greatly improve the classification accuracy rate, Nazir et al. employed local binary pattern (LBP) to extract local information from the face, which they then merged with clothing features. Next, we combined PSO and GA to select the most significant feature set that more accurately represented the gender, therefore reducing the data size dimension. Vidhya and Kumar implemented a hybrid method that combines PSO and GA for channel estimation in MIMO orthogonal frequency division

multiplexing (MIMO-OFDM) systems. All computed iterations, mutation and crossover values, and overall performance were better with the proposed approach than with the LS and MMSE approaches. Using three separate, nonoverlapping training sets, Xiao et al. constructed three separate models based on neural networks: the Elman network, the generalized regression neural network (GRNN), and the wavelet neural network (WNN). In terms of prediction performance, the ensemble ANNs-PSO-GA technique surpassed other single models and linear combination models, according to their empirical data. The authors Ghamisi and Benediktsson introduced a new approach to feature selection using a GA and a PSO together. The fitness value was the overall accuracy of a support vector machine (SVM) classifier on validation samples. To evaluate the new approach, the widely-used Indian Pines hyperspectral dataset was utilized. The results confirmed that the innovative method could automatically select the most informative information based on classification accuracy while also taking reasonable processing time into account, all without requesting users to predetermine the amount of data needed.

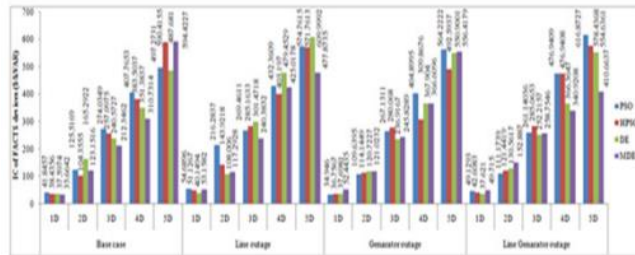


Figure: IC assessment of WSCC 9 bus pool structure using PSO, HPSO, DE and MDE

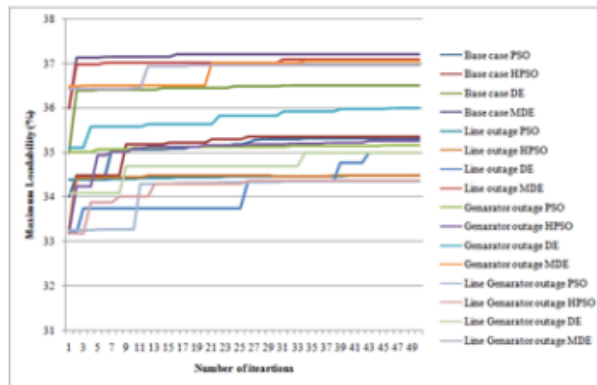


Figure: Convergence characteristics of PSO, HPSO, DE and MDE for WSCC 9 bus pool structure

An ML bar diagram with PSO, HPSO, DE, MDE, N-1, N-2, and pool configuration contingencies was generated by populating the WSCC 9 bus system with various devices, as shown in the image. As the bar chart's device count grows, ML will also grow. At 5.2, we may observe To investigate the overall IC for WSCC 9 bus pool systems, bar charts are employed by inserting a certain quantity of devices with PSO, HPSO, DE, and MDE into the base case, N-1, and N-2 contingencies. More ML receivers on the system result in a higher total IC, as seen in the bar graph.

#### 4.METHODOLOGY

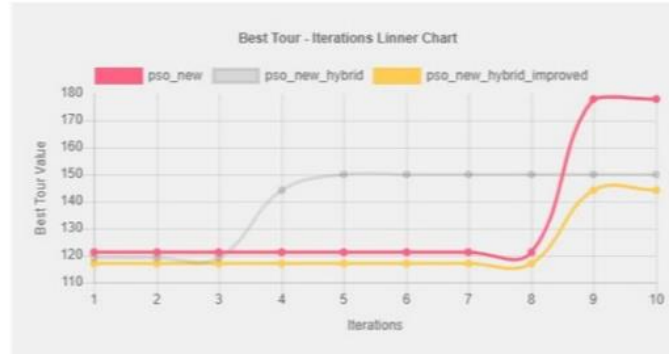
##### Design and Implementation of Optimized PSO (OpPSO)

Parameter tweaking is the main emphasis of the PSO optimization. As part of the process, each particle globally evaluates its fitness against that of the entire swarm population. The main parameter is the particle's velocity, which changes the particle in accordance with the world's best particle. As the particle's velocity changes, so does its position. Two random constants, R1 and R2, whose values range from 0 to 1, are being discussed. Two other constants, c1 and c2, called positive weighing factors, govern the particle's relative behavior. In order to determine the best local and global value, several criteria are utilized. For optimal results, use the following settings to get the optimum TSP solution. The optimal weighting value is 10, and the particle's velocity is 5. We take C1 and C2 to mean two things. A speed between -5 and 5 is possible. Twenty to one hundred particles and five to fifty iterations are possible, depending on the requirements of the problem set.

#### 5.RESULTS AND DISCUSSION

##### Table Results for ACO and PSO algorithms

No. Of Cities = 20 Iteration = 10										
ACO Number of Ants =20, Alpha=1.5, Beta=2, Rho=2										
	1	2	3	4	5	6	7	8	9	10
Basic	134	111	111	144	163	163	167	145	165	155
Hybrid	122	112	112	122	142	140	165	135	155	145
Optimized	<b>104</b>	<b>104</b>	<b>100</b>	<b>106</b>	<b>136</b>	<b>130</b>	<b>133</b>	<b>123</b>	<b>133</b>	<b>131</b>
PSO										
Basic	315	315	315	315	445	445	753	652	721	680
Hybrid	262	260	260	313	345	345	608	543	625	623
Optimized	<b>221</b>	<b>220</b>	<b>220</b>	<b>221</b>	<b>336</b>	<b>345</b>	<b>607</b>	<b>540</b>	<b>605</b>	<b>615</b>



**Figure: Best tour iteration chart of PSO for limited number of cities**

Optimized PSO performs better than basic and hybrid PSO when it comes to optimal tour representation. The overall algorithm, however, experiences a high rate of stagnation due to the finite number of cities and particles.



**Figure: Process time chart of PSO for limited number of cities**

Figure 5.30 shows that Basic PSO comes to a complete halt in this scenario. Noticeably, the hybrid technique can outperform the optimized one on occasion due to the 2-opt algorithm swaps.

**Table: PSO best tour performance for large instances**

No. Of Cities=100 Iteration=100 Number of Particle=100										
Parameters : Velocity(V)=5 Inertia Weight=10										
	1	2	3	4	5	6	7	8	9	10
Basic	1984	1984	1984	1984	1984	1984	2126	2126	2126	2126
Hybrid	<b>1558</b>	<b>1580</b>	1619	1622	1635	<b>1635</b>	<b>1700</b>	1710	<b>1710</b>	<b>1710</b>
Optimized	1575	1604	<b>1604</b>	1610	1615	1702	<b>1702</b>	<b>1702</b>	1720	1735

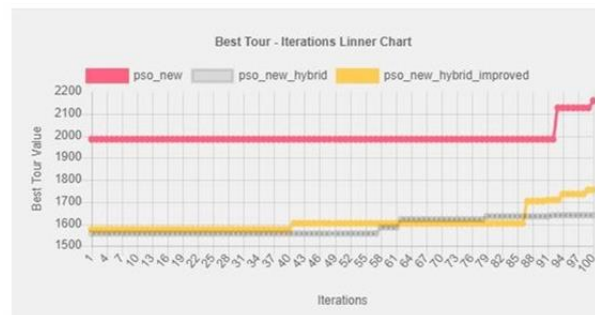


Figure: Best tour chart of PSO for large number of iterations

## 6.CONCLUSION

There was a dearth of comprehensive theoretical research on PSO, which limited its application potential despite producing exceptional outcomes in certain sectors. We believe it would be interesting to see a more comprehensive theoretical study of the convergence and run-time properties of PSO and its variants. Additionally, fitness landscapes and PSO dynamics are excellent areas for theoretical investigation. It is more difficult to write sequential programs than parallel ones since programmers have to think about how numerous subtasks will communicate and stay in sync with each other. Because of this, there aren't many works that discuss PSO at the same time. Possible new computational forms to investigate in the next years include massively parallel processors, grid computing, and PSO in computer clusters. Parallel computing is fascinating on many levels, including the bit, instruction, data, and task levels of computation.

## REFERENCES

1. Luitel, B., Venayagamoorthy, G. K., "Differential evolution particle swarm optimization for digital filter design," in Proc. IEEE Cong. Evol. Comput., Hong Kong, China, Jun. 2008, pp. 3954–3961.
2. Mahi, M., et al., A new hybrid method based on Particle Swarm Optimization, Ant Colony Optimization and 3-Opt algorithms for Traveling Salesman Problem, In Applied Soft Computing, Volume 30, 2015, Pages 484-490.
3. Mandloi, M., Bhatia, V., A low-complexity hybrid algorithm based on particle swarm and ant colony optimization for large-MIMO detection, In Expert Systems with Applications, Volume 50, 2016, Pages 66- 74.
4. Mendes, R., Kennedy, J., Neves, J., "Watch thy Neighbour or How the Swarm can Learn from its Environment", Proceedings of the IEEE Swarm Intelligence Symposium, pp. 88-94, Apr. 2003.
5. Metropolis, N. et al. "Equations of state calculations by fast computing machines", J. Chem. Phys. 21 (1953) 1087–1092.
6. Mohammadi, A., Jazaeri, M., "A hybrid particle swarm optimization-genetic algorithm for optimal location of SVC devices in power system planning", Proceedings of 42nd International Universities Power Engineering Conference, 2007, pp.1175–1181.
7. Moussa, R., Azar, D., "A PSO-GA approach targeting fault-prone software modules", The Journal of Systems and Software, 132 (2017) 41-49.
8. Naka, S., Genji, T., Yura, T., Fukuyama, Y., "Practical Distribution State Estimation using Hybrid Particle Swarm Optimization", IEEE Power Engineering Society Winter Meeting, vol. 2, pp. 815-820, Jan. 2001.
9. Nik, A. A., Nejad, F. M., Zakeri, H., "Hybrid PSO and GA approach for optimizing surveyed asphalt pavement inspection units in massive network", Automation in Construction 71 (2016) 325-345.
10. Niknam, T., Amiri, B., An efficient hybrid approach based on PSO, ACO and k-means for cluster analysis, Applied Soft Computing, Volume 10, Issue 1, 2010, Pages 183-197.
11. P.C.Ma, F.Tao, Y.L.Liu, L.Zhang, H.X.Lu and Z.Ding, "A hybrid particle swarm optimization and simulated annealing algorithm for job-shop scheduling," 2014 IEEE International Conference on Automation Science and Engineering (CASE), Taipei, 2014, pp. 125-130.
12. P.Li, N. Cui, Z.Kong and C.Zhang, "Energy management of a parallel plug-in hybrid electric vehicle based on SA-PSO algorithm", 2017 36th Chinese Control Conference (CCC), Dalian, 2017, pp. 9220-9225.
13. Premalatha, K., Natarajan, A.M., "Discrete PSO with GA operators for document clustering", International Journal of Recent Trends in Engineering 1 (2009) 20–24.
14. Price, K., Storn, R., "Differential evolution – a simple and efficient adaptive scheme for global optimization over continuous spaces", Technical Report, International Computer Science Institute, Berkeley, 1995.