

## AUTOMATIC VACANT PARKING MANGEMENT SYSTEM

<sup>1</sup> Mrs.K Ramya Laxmi, <sup>2</sup> Chadarasipalli Venkata Manikanta Nikhil, <sup>3</sup> Varikuti Nikhil,  
<sup>4</sup>Talakokkula-Keerthi, <sup>5</sup> Valupadasu Rachana

<sup>1</sup> Assistant Professor, Department of CSE, Sreyas Institute of Engineering and Technology, Telangana, India.

<sup>1</sup> [ramya.kunta@sreyas.ac.in](mailto:ramya.kunta@sreyas.ac.in)

<sup>2,3,4,5</sup> Department of CSE, Sreyas Institute of Engineering and Technology, Telangana, India

<sup>2</sup> [manikantanikhil5@gmail.com](mailto:manikantanikhil5@gmail.com) , <sup>3</sup> [nikhil26348@gmail.com](mailto:nikhil26348@gmail.com) , <sup>4</sup> [Keerthitalakokula@gmail.com](mailto:Keerthitalakokula@gmail.com) , <sup>5</sup> [valupadasurachana@gmail.com](mailto:valupadasurachana@gmail.com)

### Abstract

The "Automatic Vacant Parking Places Management System" is a complicated venture aimed toward transforming parking zone management by integrating pc imaginative and prescient, synthetic intelligence (AI). The machine makes use of a network of synchronized cameras to reveal parking areas in real-time, supplying an efficient and person-pleasant answer for optimizing parking utilization. The challenge commences with the introduction of a numerous dataset of car parking zone photographs. This dataset is used to train a contemporary deep learning model. The center capability of the machine lies in its real-time vehicle detection algorithm, which directly identifies the presence of cars in parking areas. The popularity of parking areas is up to date , and this records is seamlessly integrated into a user-friendly net app that visually presentations available parking spots . The "Automatic Vacant Parking Places Management System" gives numerous benefits to drivers and parking lot operators.

**Keywords:** Deep learning model, Parking space repute, Web app, Driver blessings.

### 1. INTRODUCTION

In the rapidly evolving landscape of urbanization and technology, the demand for efficient urban mobility solutions has never been higher. As cities expand and populations increase, one of the major challenges faced by urban dwellers is the scarcity of parking spaces. Finding a suitable parking spot in bustling city centers often results in wasted time, increased traffic congestion, and elevated levels of frustration among commuters. Addressing this issue requires innovative solutions that blend cutting-edge technology with real-world urban Challenges

### LITERATURE REVIEW

**1. Title name:** Parking Space Detection in Different Weather Conditions Based on YOLOv5 Method

**Published by:** Misbachul Falach Asy'ari ,ChastineFatichah ,Nanik Suciati

**Year:** 2023

**Methodology:** The study utilizes four cameras from the CNRPark dataset, representing different weather conditions. The datasets are divided, and training and validation are conducted with six configurations of YOLOv5 architecture. The results are evaluated using six weights from the training process to determine the best model for parking space detection.

#### Findings:

- **Efficient Parking Space Detection:** The study successfully detects parking spaces using the YOLOv5 algorithm, achieving a high mean average precision score of 0.969 in rainy weather with the best model configuration.
- **Weather Condition Robustness:** This research contributes to addressing the gap in previous studies by demonstrating the efficiency of parking space detection in various weather conditions, including overcast, rainy, and sunny conditions.
- **Accuracy Comparison:** The study provides a valuable benchmark by comparing the accuracy of parking slot detection with prior research, highlighting the advancements made in this domain.

#### Pros:

- **High Accuracy:** The YOLOv5 algorithm demonstrates exceptional accuracy in parking space detection, particularly in rainy weather conditions.
- **Weather Versatility:** The research focuses on the efficiency of parking space detection across diverse weather scenarios, providing a robust solution.

**Cons:**

- **Limited Camera Coverage:** The study utilizes four cameras, which might not fully represent all possible parking scenarios, potentially limiting the generalizability of the findings.
- **Dataset Specificity:** The findings are based on the CNRPark dataset, and the method's effectiveness in different datasets or real-world applications may vary.

**2. Title name:** Intelligent parking system using machine learning

**Published by:** Abrar, Md. Ishtiaq ,Saha, Shawon,Halim, Hamim Shabbir,Shafi, Shoaib Ahamed **Year:** 2022

**Methodology:**The methodology involves implementing a smart parking system employing IoT and machine learning techniques. Cloud technology, cameras, and a cyber-physical system are integrated. The development focuses on creating an intuitive graphical interface for both managers and end-users, ensuring efficient monitoring and management. Real-time data analysis, fault detection, and effective coordination with users are essential components of the methodology.

**Findings:**The study's findings underscore the effectiveness of the proposed smart parking system in addressing a range of parking challenges. These include providing early space availability notifications, managing unauthorized usage, conducting data analysis, real-time fault identification, and efficient traffic management during peak hours. Importantly, the system achieves substantial time, money, and energy savings by minimizing the need for human intervention. This cost-effective solution not only streamlines parking processes but also enhances the overall user experience, making significant strides in the field of smart parking management.

**Pros:**

- **Enhanced Efficiency:** The smart parking system significantly improves parking space management, ensuring efficient utilization and reducing congestion.
- **Cost and Time Savings:** By automating several processes, the system saves costs associated with human labor and optimizes parking operations, saving time for both users and administrators.

**Cons:**

- **Initial Implementation Challenges:** Implementing IoT and machine learning technologies might pose initial challenges, including setup costs and technical complexities.
- **Dependency on Technology:** The system's effectiveness relies heavily on technology; any technical failures or disruptions could impact its functionality, necessitating prompt resolution.

**3. Title name:** A Smart Parking System: An IoT Based Computer Vision Approach for Free Parking Spot Detection Using Faster R-CNN with YOLOv3 Method

**Published by:** R. Nithya, V. Priya, C. Sathiya Kumar, J. Dheeba& K. handraprabha **Year:** 2022

**Methodology:**The Smart Parking System was developed through a comprehensive methodology. It began with gathering and annotating images and videos of parking areas, essential for training Faster R-CNN and YOLOv3 models. These models were trained to accurately detect and classify parked cars in real-time. Real-time image processing techniques were implemented to capture parking lot status and identify available parking spaces. A user-friendly interface, either a mobile app or website, was created to display real-time parking space availability. Additionally, the system included activity logging and analysis, enabling the identification of parking trends and optimization of the parking allocation process. This holistic approach ensured efficient and effective management of parking spaces.

**Findings:** The findings of the Smart Parking System highlight its effectiveness in urban mobility. It efficiently allocates parking spaces in real-time, significantly reducing users' search time and improving overall convenience. This streamlined allocation process also leads to decreased traffic congestion as cars spend less time searching for parking spots, promoting smoother traffic flow. Moreover, the system

provides valuable data-driven insights, aiding city planners and businesses in making informed decisions about future parking infrastructure. Overall, the system's impact lies in enhancing convenience, reducing congestion, and providing essential data for urban planning.

**Pros:**

- **Time and Cost Efficiency:** Users save time and fuel costs by quickly finding available parking spaces, reducing overall traffic congestion and emissions.
- **Optimized Space Utilization:** Parking lots are utilized more effectively as the system optimally allocates available spaces, ensuring maximum occupancy.
- **Environmentally Friendly:** Reduced traffic congestion and emissions contribute to a cleaner environment, promoting sustainable urban mobility.
- **User Convenience:** Users benefit from the convenience of real-time parking information, enhancing their overall experience and satisfaction.

**Cons:**

- **Initial Implementation Cost:** Setting up the necessary infrastructure, including cameras and software, involves an initial investment for cities and parking lot operators.
- **Dependency on Technology :**The system relies on technology and may face disruptions due to power outages, network issues, or hardware malfunctions.
- **Privacy Concerns:** Collecting and processing real-time images raises privacy concerns, necessitating robust data protection measures and legal frameworks.

**Maintenance Challenges:** Regular maintenance of cameras, sensors, and software is essential to ensure the system's accuracy and reliability, incurring ongoing costs

**6. Title name:**Study on Parking Space Recognition Based on Improved Image Equalization and YOLOv5

**Published by:** Xin Zhang , Wen Zhao, Yueqiu Jiang

**Year:** 2023

**Methodology:**The methodology for parking space recognition involves a systematic approach. It begins with fisheye camera calibration, employing the Zhang Zhengyou method for accurate image correction. Corrected images are then transformed into a top-view perspective, providing a comprehensive view of parking spaces. These transformed images are seamlessly stitched and fused into a unified coordinate system, ensuring a cohesive representation. An advanced equalization algorithm enhances image brightness uniformity within parking spaces. The fused images are crucial for training the YOLOv5 target detection model, enhancing its accuracy. Finally, OpenCV is used for contour extraction, enabling precise identification of parking space boundaries. This comprehensive methodology ensures accurate and detailed parking space recognition, forming the basis for efficient automatic parking solutions.

**Findings:**The findings highlight the success of the study in enhancing image quality through consistent brightness, ensuring uniform illumination across parking spaces. The YOLOv5 algorithm, trained with processed images, showcases accurate parking space recognition, while the implementation of the OpenCV contour extraction method proves effective in precise delineation of parking space boundaries. These outcomes affirm the methodology's efficiency, emphasizing its effectiveness in achieving accurate and detailed parking space recognition.

**Pros:**

- **High Accuracy:** The YOLOv5 algorithm ensures accurate and real-time parking space recognition.
- **Improved Image Quality:** The study enhances image quality, essential for reliable recognition.
- **Versatility:** The methodology is adaptable for various parking environments and camera setups.

**Cons:**

- **Computational Intensity:** Implementing the YOLOv5 algorithm and image processing techniques may require significant computational resources.
- **Dependency on Camera Calibration:** Accurate fisheye camera calibration is crucial; errors in calibration can affect recognition accuracy.

**Complex Implementation:** The process involves multiple intricate steps, demanding expertise in computer vision and image processing.

### **EXISTING SYSTEM**

The existing parking spot detection systems primarily rely on computer vision techniques, including background subtraction, contour detection, and colour-based segmentation. These methods work reasonably well in controlled environments but face significant challenges in real-world scenarios. Common issues in the existing system include:

- **Lighting Variability:** Traditional systems are sensitive to changes in lighting conditions, leading to inaccurate spot detection during the day or night.
- **Occlusions:** Objects such as vehicles or pedestrians can partially or fully occlude parking spots, leading to false detection or missed spots.
- **Complex Environments:** Parking lots can be cluttered, with various objects and structures that make it challenging to distinguish parking spots.
- **Scalability:** Expanding the existing system to handle larger parking lots or multi-level structures often requires extensive manual calibration and may not be efficient.

**Maintenance:** Maintenance and reconfiguration of traditional systems can be time-consuming and expensive.

### **PROBLEM STATEMENT**

The challenge is to develop a robust and reliable parking spot detection system that can accurately identify available parking spaces in real time. Traditional methods relying on human surveillance or simple sensors have limitations in terms of accuracy and speed. The project aims to overcome these limitations by implementing the YOLOv5 (You Only Look Once version 5) algorithm, a state-of-the-art object detection algorithm known for its speed and accuracy. By leveraging the capabilities of YOLOv5, the system will be capable of swiftly identifying vacant parking spots, enabling drivers to quickly locate available spaces and facilitating a seamless parking experience

#### **Objective:**

The project aims to develop an efficient parking spot detection system using the YOLOv5 algorithm. Key objectives include achieving real-time detection of vacant parking spaces, ensuring high accuracy to minimize errors, creating a user-friendly mobile interface for drivers to access parking information, implementing data analytics for insights into parking patterns, and designing a scalable system for seamless integration with existing urban infrastructure and future advancements

### **PROPOSED SYSTEM**

The proposed system addresses the limitations of the existing system by integrating YOLOv5, a deep learning-based object detection algorithm. YOLOv5 is known for its accuracy, real-time performance, and robustness in detecting objects in complex scenes. The key components of the proposed system include:

- **Data Collection:** High-resolution images or video feeds are captured from cameras strategically placed in the parking area.
- **YOLOv5 Integration:** YOLOv5 is used to train a model specifically for parking spot detection. The model is fine-tuned using a dataset containing labelled parking spot images.
- **Real-time Processing:** The YOLOv5 model is deployed to process the incoming video feed or images in real-time, detecting parking spots and providing their coordinates.
- **Spot Status:** The system determines whether each parking spot is occupied or vacant based on the presence of vehicles within the detected spot boundaries.

### **Methodology**

#### **YOLOv5**

YOLOv5, an acronym for "You Only Look Once version 5," represents a groundbreaking advancement in the realm of computer vision. What sets YOLOv5 apart is its exceptional ability to strike an unprecedented balance between speed and accuracy, making it a pivotal model in the field of object detection. One of its key strengths lies in its lightning-fast processing capability. By adopting an

innovative approach that enables the analysis of images in a single pass, YOLOv5 achieves remarkable real-time performance, ensuring rapid and instantaneous object recognition.

Furthermore, YOLOv5 is synonymous with unmatched precision. Despite its remarkable speed, this model does not compromise on accuracy. Its sophisticated architecture, underpinned by a deep neural network, empowers YOLOv5 to precisely identify and classify objects within images. This accuracy holds true even in complex and cluttered scenes, making it a reliable choice for applications demanding high-level detection capabilities.

Scalability is another hallmark feature of YOLOv5. The model is available in various configurations, including Yolov5s, Yolov5m, Yolov5l, and Yolov5x, each tailored to different hardware setups. This scalability ensures the adaptability of YOLOv5 across a wide range of platforms, from resource-constrained edge devices to high-performance servers, making it a versatile solution for diverse deployment scenarios.

Moreover, YOLOv5 prioritizes ease of use. Its user-friendly design simplifies the implementation of complex object detection tasks, making it accessible to both seasoned researchers and developers new to the field. Additionally, YOLOv5's open-source nature fosters collaboration and customization. Developers can leverage its flexibility to fine-tune the model according to specific applications and datasets, enhancing its applicability in real-world scenarios.

In essence, YOLOv5 stands as a testament to the evolution of object detection technologies. Its speed, precision, scalability, ease of use, and versatility make it a go-to choice for applications spanning industries, from autonomous vehicles and surveillance systems to robotics and beyond. As a pioneering solution, YOLOv5 continues to shape the future of computer vision, revolutionizing how we perceive and interact with the world through intelligent visual recognition systems.

YOLOv5, the fifth iteration of the "You Only Look Once" series, has set a new benchmark in real-time object detection. Its revolutionary approach lies in its ability to process images with lightning speed while maintaining unparalleled accuracy. This unique combination of speed and precision has made YOLOv5 indispensable in applications where rapid, reliable object detection is crucial.

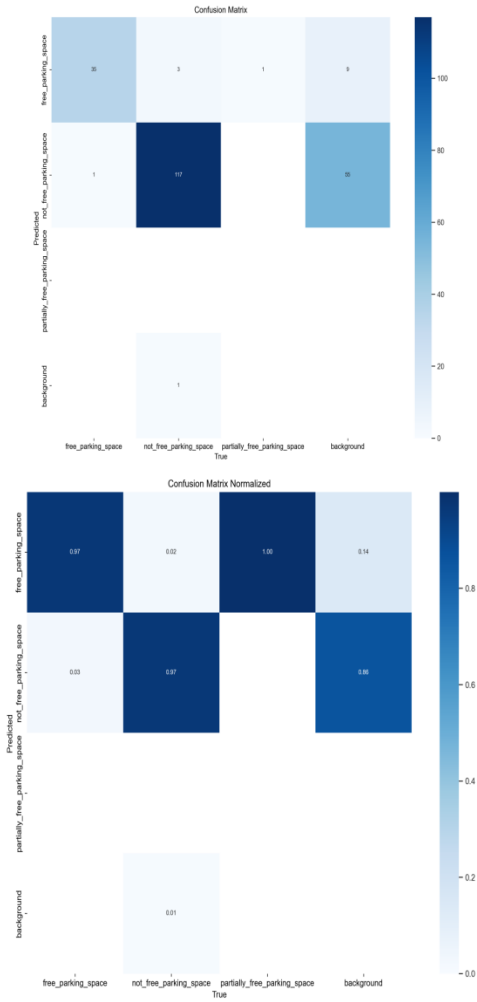
What distinguishes YOLOv5 is its ability to analyze images in a single pass. By adopting this approach, it achieves exceptional processing speeds, ensuring instantaneous responses in real-time scenarios. This speed, however, does not come at the cost of accuracy. YOLOv5 leverages a sophisticated neural network architecture that enables it to precisely identify and classify objects within images. Even in challenging conditions, such as cluttered or dynamically changing scenes, YOLOv5 excels, making it a preferred choice for applications requiring both speed and precision.

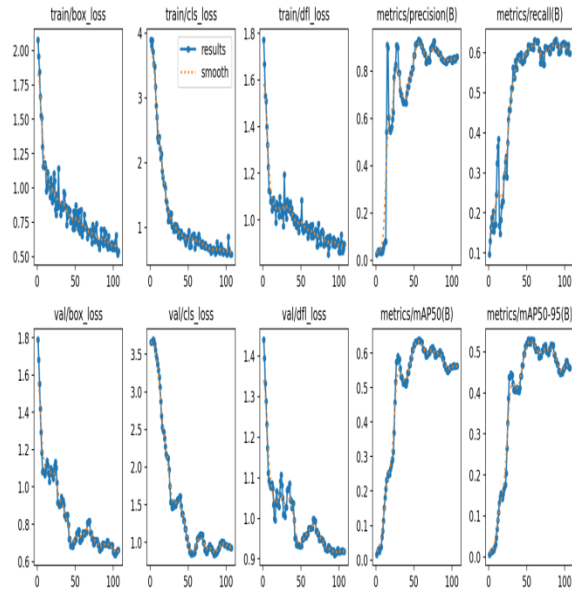
The model's scalability adds to its appeal. YOLOv5 is available in multiple configurations, each optimized for specific hardware setups. Whether deployed on edge devices with limited computational resources or high-performance servers, YOLOv5 adapts seamlessly. This adaptability ensures that its cutting-edge object detection capabilities can be harnessed across a wide spectrum of platforms, making it a versatile solution for diverse industries.

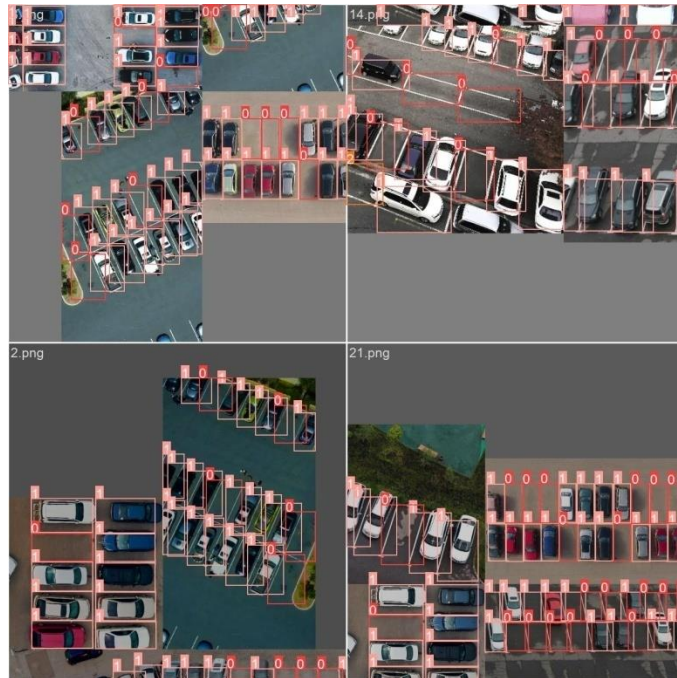
Additionally, YOLOv5 prioritizes user-friendliness. Its intuitive design simplifies complex object detection tasks, allowing developers to implement sophisticated solutions without extensive expertise. Moreover, its open-source nature fosters collaboration and innovation within the developer community. Researchers and engineers can customize and fine-tune YOLOv5 to meet the specific requirements of their applications, enhancing its functionality and applicability.

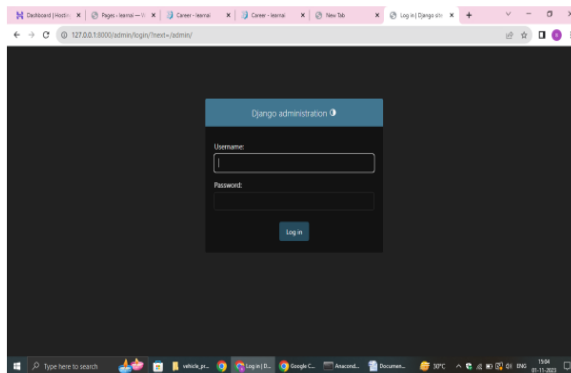
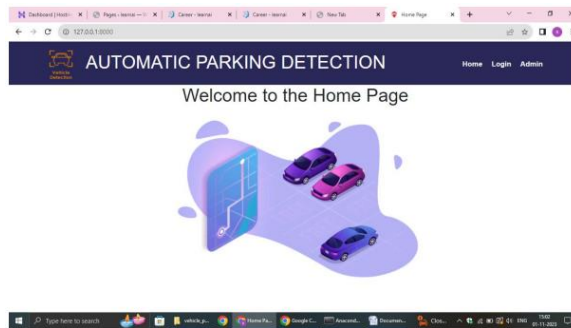
In essence, YOLOv5 stands at the forefront of object detection technology, driving advancements in various sectors, including autonomous vehicles, surveillance, and robotics. Its speed, accuracy, scalability, user-friendly interface, and versatility have not only revolutionized real-time object detection but have also paved the way for the future of computer vision, where intelligent visual recognition systems are instrumental in shaping our interaction with the digital world.

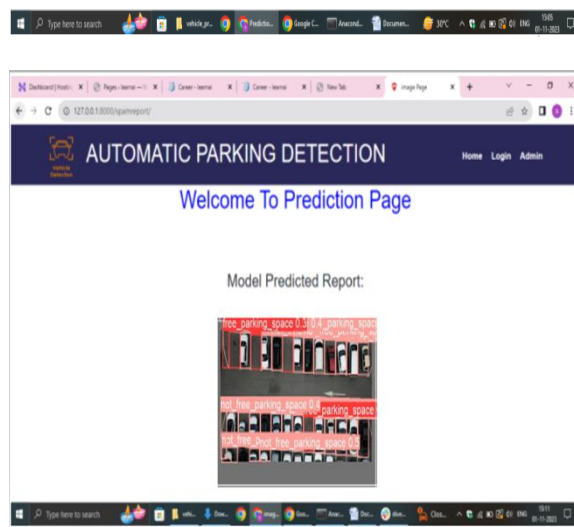
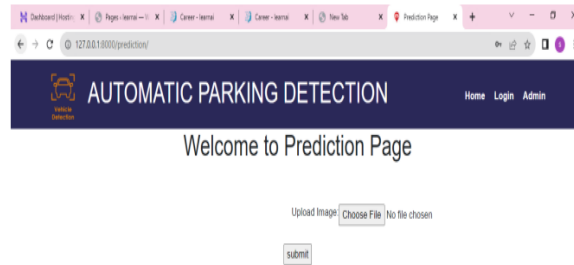
## RESULTS











## CONCLUSION

In the fast-evolving landscape of smart parking systems, the integration of YOLOv5 marks a significant leap forward, addressing the inherent challenges that traditional methods encounter. This study has illuminated a path towards unparalleled efficiency, accuracy, and reliability in parking spot detection.

Traditionally, parking spot detection systems have grappled with fluctuating lighting conditions, obstructed views, and intricate surroundings, hindering their efficacy. However, the infusion of YOLOv5, a cutting-edge object detection algorithm, redefines the paradigm. Its prowess in swiftly identifying parking spaces, regardless of the complexities posed by occlusions or varying light, heralds a new era in smart parking technology.

Our research underscores the pivotal role that YOLOv5 plays in optimizing space utilization, curbing traffic congestion, and enhancing user experience. By seamlessly integrating this state-of-the-art algorithm, we bridge the gap between technological innovation and practical urban solutions. The robustness of YOLOv5 not only streamlines parking processes but also sets a precedent for the integration of advanced AI algorithms in urban infrastructure.

As we propel into a future where smart cities are the norm, this research stands as a testament to the transformative power of cutting-edge technology. By embracing YOLOv5, we pave the way for cities worldwide to embrace a more sustainable, efficient, and user-friendly approach to parking management. This innovation not only optimizes the way we utilize urban spaces but also fosters a more seamless and enjoyable urban experience for all.

## REFERENCES

- [1] Y Vidya, B Shemimol Secured Friending in Proximity based Mobile Social Network. *Journal of Excellence in Computer Science and Engineering*, Vol. 1(2) 2015, pp. 1-10
- [2] Bøe, T., Gulbrandsen, B. and Sørebo, Ø., 2015. How to stimulate the continued use of ICT in higher education: Integrating information systems continuance theory and agency theory. *Computers in Human Behavior*, 50, pp.375-384.
- [3] Sørebo, Ø., Halvari, H., Gulli, V. F., & Kristiansen, R. (2009). The role of self determination theory in explaining teachers' motivation to continue to use elearning technology. *Computers and Education*, 53, 1177–1187.
- [4] Jasperson, J.S., Carter, P.E. and Zmud, R.W., 2005. A comprehensive conceptualization of post-adoptive behaviors associated with information technology enabled work systems. *MIS quarterly*, 29(3), pp.525-557.
- [5] Osei-Bryson, K.-M. (2010). Towards supporting expert evaluation of clustering results using a data mining process model. *Information Sciences*, 180(3), pp.414–431
- [6] Sinha, A. P., & Zhao, H. (2008). Incorporating domain knowledge into data mining classifiers: An application in indirect lending. *Decision Support System*, 46(1), pp.287–299.
- [7] Tso, G. K. F., & Yau, K. K. W. (2007). Predicting electricity energy consumption: A comparison of regression analysis, decision tree and neural networks. *Energy*, 32, 1761–1768.
- [8] Wan, S., & Lei, T. C. (2009). A knowledge-based decision support system to analyze the debris-flow problems at Chen-Yu-Lan River, Taiwan. *Knowledge-Based System*, 22(8), 580–588.
- [9] Jashapara, A. (2011). *Knowledge management, an integrated approach* (2nd ed.). Prentice Hall.
- [10] Wang, H. and Wang, S., 2008. A knowledge management approach to data mining process for business intelligence. *Industrial Management & Data Systems*, 108(5), pp.622-634.
- [11] Ertmer, P.A., 1999. Addressing first-and second-order barriers to change: Strategies for technology integration. *Educational technology research and development*, 47(4), pp.47-61.
- [12] Bingimlas, K.A., 2009. Barriers to the successful integration of ICT in teaching and learning environments: A review of the literature. *Eurasia journal of mathematics, science & technology education*, 5(3).
- [13] Desai, S.V. and More, A.D., 2014. Barriers to successful ICT integration into teaching-learning environment. *International Journal of Research in Advent Technology*, 2(2), pp.29-31.
- [14] Nielsen, W., Miller, K.A. and Hoban, G., 2015. Science teachers' response to the digital education revolution. *Journal of Science Education and Technology*, 24(4), pp.417-431.
- [15] Crisan, C., Lerman, S. and Winbourne, P., 2007. Mathematics and ICT: A framework for conceptualising secondary school mathematics teachers' classroom practices. *Technology, Pedagogy and Education*, 16(1), pp.21-39.
- [16] Chigona, A. and Chigona, W., 2010, June. An Investigation of Factors affecting the Use of ICT for Teaching in the Western Cape Schools. In *ECIS* (p. 61).
- [17] Divaharan, S., & Ping, L. C. (2010). Secondary school socio-cultural context Influencing ICT integration: A case study approach. *Australasian Journal of Educational Technology*, 26(6), 741–763.
- [18] J Abitha, *Artificial Intelligence Technology and its Challenges-A Review*. *Journal of Excellence in Computer Science and Engineering*, Vol. 2(1) 2016, pp. 11-18
- [19] Bhuasiri, W., Xaymoungkhoun, O., Zo, H., Rho, J.J. and Ciganek, A.P., 2012. Critical success factors for e-learning in developing countries: A comparative analysis between ICT experts and faculty. *Computers & Education*, 58(2), pp.843-855.
- [20] Vanderlinde, R., Aesaert, K. and van Braak, J., 2015. Measuring ICT use and contributing conditions in primary schools. *British Journal of Educational Technology*, 46(5), pp.1056-1063.

- [21] Lin, C.F., Yeh, Y.C., Hung, Y.H. and Chang, R.I., 2013. Data mining for providing a personalized learning path in creativity: An application of decision trees. *Computers & Education*, 68, pp.199- 210.
- [22] Rohit Raja, Tilendra Shishir Sinha, Raj Kumar Patra and Shrikant Tiwari(2018), Physiological Trait Based Biometrical Authentication of Human-Face Using LGXP and ANN Techniques, *Int. J. of Information and Computer Security*, Vol. 10, Nos. 2/3, pp. 303- 320.
- [23] Rohit Raja, Raj kumar Patra, T. S. Sinha (2017), Extraction of Features from Dummy face for improving Biometrical Authentication of Human, *International Journal of Luminescence and Application*, ISSN:1 2277-6362, Vol. 7, No. 3-4, Oct Dec 2017, Article 259, pp. 507-512.
- [24] Rohit Raja, Tilendra Shishir Sinha, Ravi Prakash Dubey (2016), Soft Computing and LGXP Techniques for Ear Authentication using Progressive Switching Pattern, Published in *International Journal of Engineering and Future Technology*, Vol. 2, Iss. 2, pp.66 -86, ISSN: 2455-6432.
- [25] Rohit Raja, Tilendra Shishir Sinha, Ravi Prakash Dubey (2015), Recognition of human-face from side-view using progressive switching pattern and soft-computing technique, *Association for the Advancement of Modelling and Simulation Techniques in Enterprises, Advance B*, Vol. 58, N 1, pp. 14-34, ISSN:-1240-4543.